



Constructive
configuration
of CBP-RC models



Complete low pressure centrifugal range with forward curved impeller. The range comprises different versions and sizes of double and single inlet fans. All these low pressure centrifugal fans are designed for belt drive operation.

All the fans are manufactured from galvanised sheet steel and fitted with impeller manufactured from galvanized sheet steel.

Additional information

Mounting feet as accessory allowing 4 different positions (basic version).

The fan can be supplied with motor and belt drive mounted.

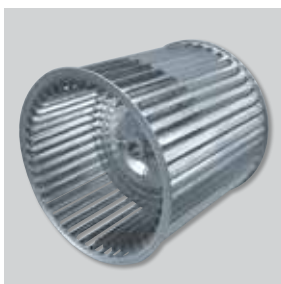
On request

Belt-drive fan-deck assemblies available with either a fan scroll or separate base frame mounted motor configurations.



High robustness

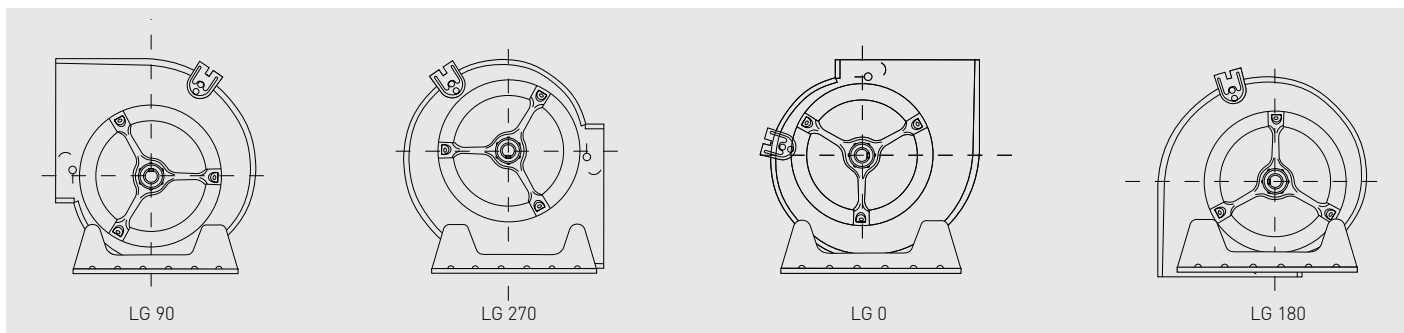
One piece die-cast ball bearing support.



Impeller dynamically balanced

Impeller dynamically balanced, according to ISO 1940 standard, providing vibration free operation.

POSITIONS



Mounting feet (accessory) allowing 4 positions of the discharge outlet.